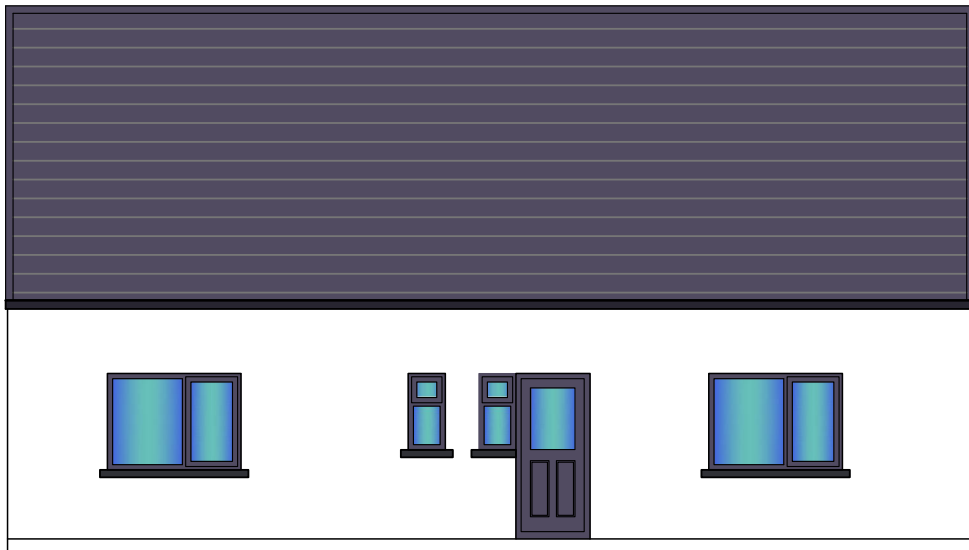
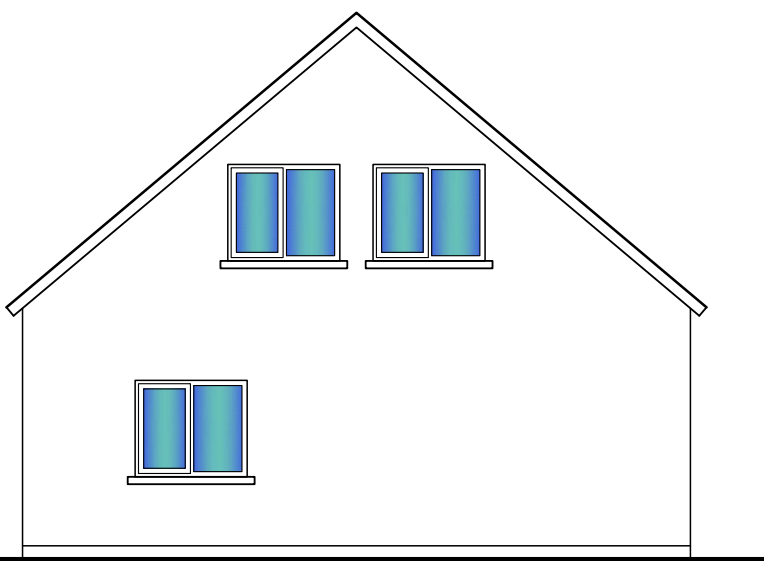


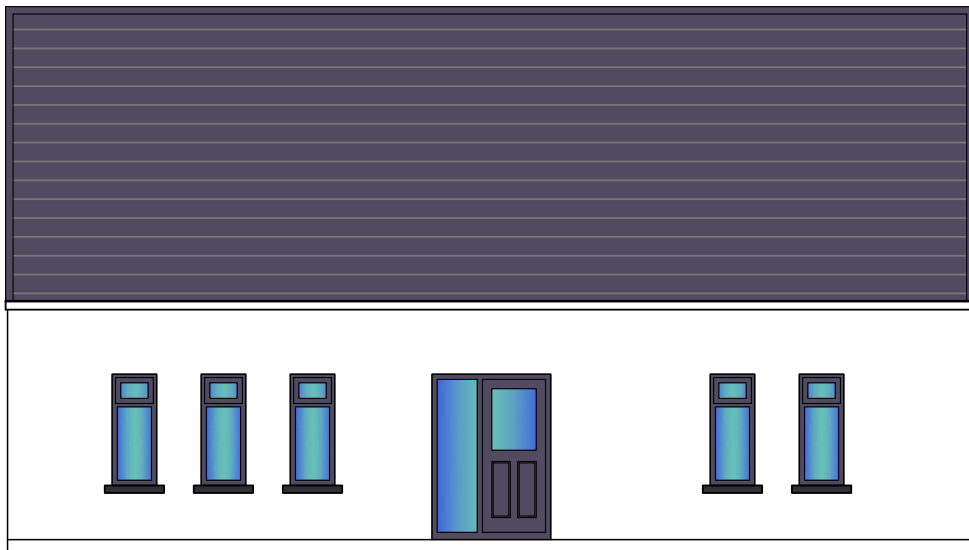
4 Bed option 2



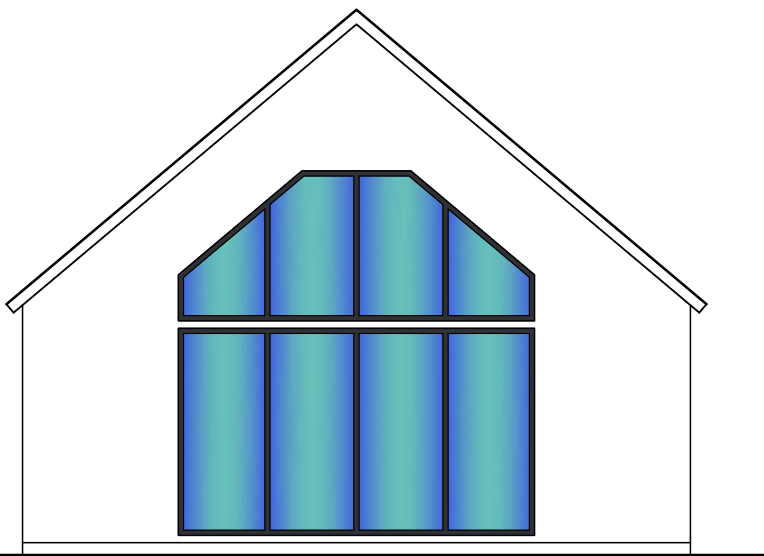
E1 NW Elevation



E4 NE Elevation



E3 SE Elevation



E2 SW Elevation

OUTLINE SPECIFICATION

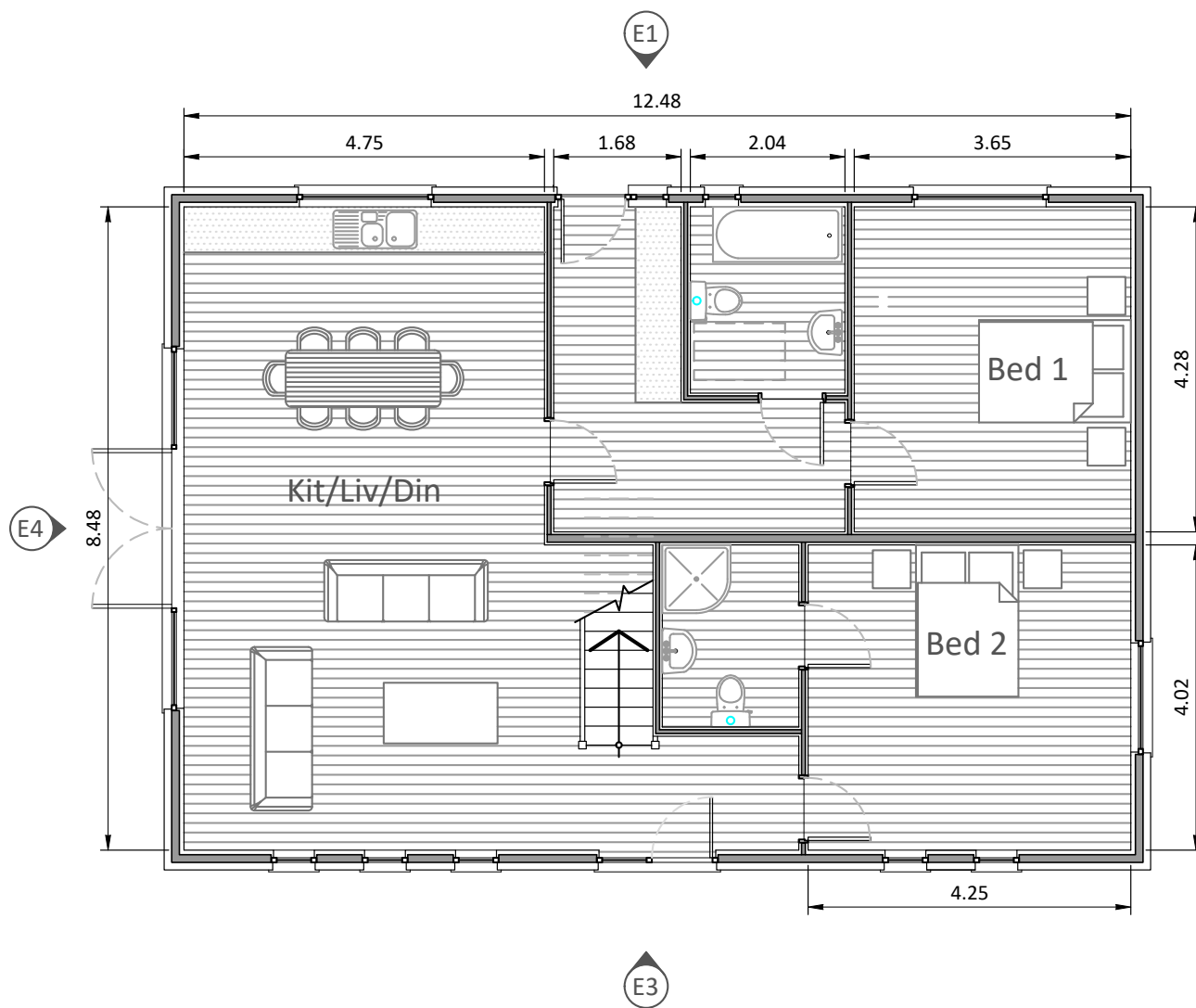
- EXTERNAL WALLS:** 100x50 RHS FRAME (REFER TO STRUCTURAL ENG. DETAILS)
- 100mm FRAMING RIGID FOILED BACK INSULATION BETWEEN FRAMES WITH 100mm EXTERNAL EPS EXTERNAL INSULATION
- 50x25 BATTEN TO FORM SERVICE VOID
- INTERIOR LINING IN 12.5mm TIMBER BOARDING / PLASTER BOARD
- INTERIOR WALLS:** 50x50 RHS FRAME (REFER TO STRUCTURAL ENG. DETAILS)
- 50x25 BATTEN TO FORM SERVICE VOID EACH SIDE.
- SURFACE LINING IN 12.5mm TIMBER BOARDING / PLASTER BOARD
- FLOORS:** 50x50 RHS FRAME (REFER TO STRUCTURAL ENG. DETAILS)
- 50mm RIGID FOILED BACKED INSULATION BETWEEN FRAMES WITH 100mm INSULATION FIXED UNDER/OVER.
- 18mm FLOORING GRADE OSB BOARD SUBSTRATE WITH AIR TIGHT MEMBRANE & CLIENTS FINISH FLOATING FLOOR OVER
- ROOF:** SLATE EFFECT CLADDIG ON KINGSPAN KS500/1000 ZIP IP OR SIMILAR Standing Seam Roof Panel, core depth 147mm
- WINDOWS:** uPVC WINDOWS WITH FIRE ESCAPE/RESCUE SUITABLE OPENING IN ALL HABITABLE ROOMS. U- Value 1.4 or BETTER

NOTES.

1. DRAWING TO BE READ IN CONJUNCTION WITH ALL RELEVANT DESIGNERS/MANUFACTURERS AND ENGINEERS DRAWINGS AND SPECIFICATIONS.
2. IT IS THE CONTRACTORS RESPONSIBILITY TO VERIFY OR DETERMINE ALL DIMENSIONS AND LEVELS REQUIRED PRIOR TO COMMENCEMENT OF CONSTRUCTION OR PRODUCTION OF FABRICATION DRAWINGS
3. REFER TO STRUCTURAL DRAWINGS & SPECIFICATION FOR STEEL DETAILS
4. FOR INSULATION DETAILS REFER TO R-Value / U-Value Calculations
5. DO NOT SCALE FROM THIS DRAWINGS. USE FIGURED DIMENSIONS ONLY.
6. ANY CONFLICTS REQUIREMENTS WITH SITE, PLANNING CONDITIONS/REGULATIONS ETC. TO BE REPORTED TO THIS OFFICE IMMEDIATELY
7. DRAINAGE PLANS - SITE SPECIFIC.
8. ELECTRIC & SERVICE LAYOUT TO AGREED WITH CLIENT AND SUBJECT TO LOCAL REQUIREMENTS

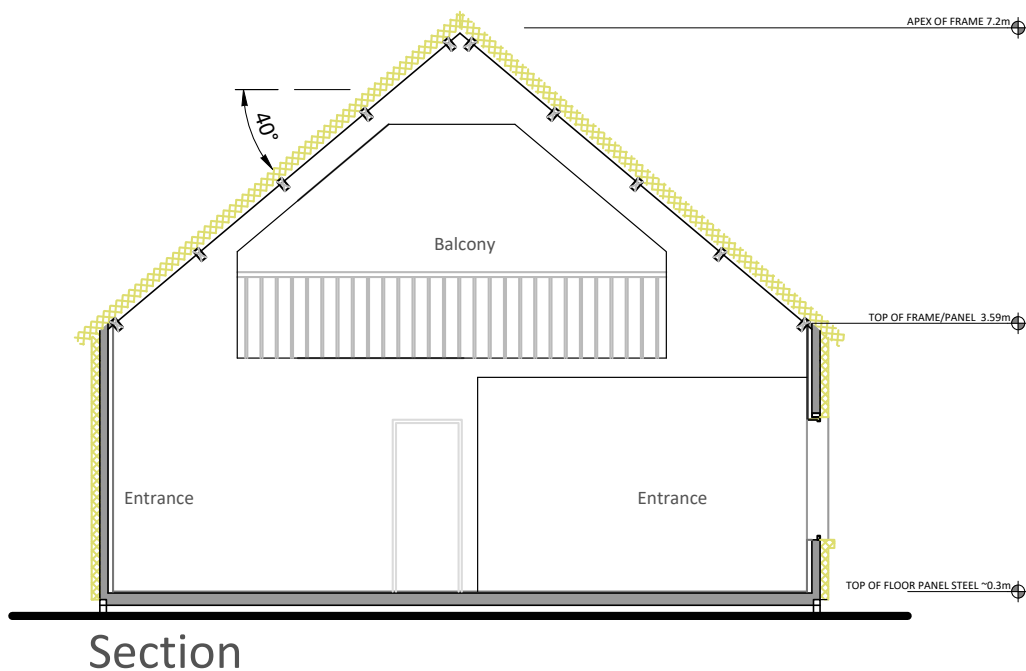
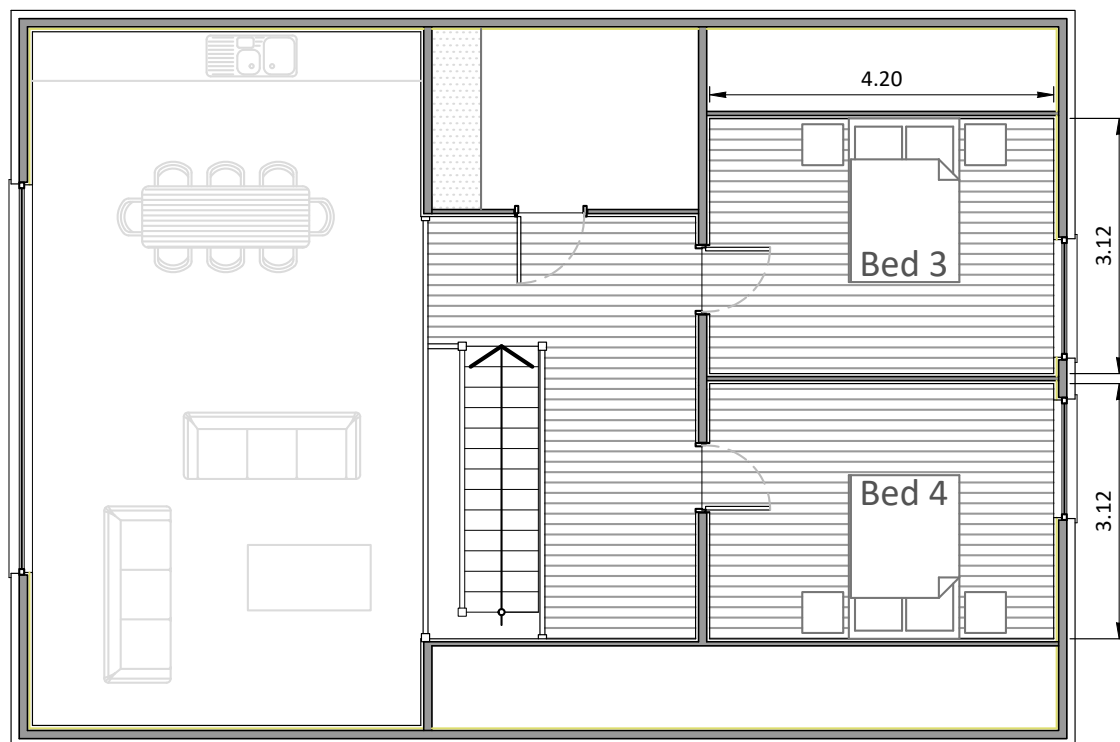
CLIENT:	Dormer	DRG TITLE:	ELEVATIONS
		DRG No:	PL(02)01
		SCALE:	1:100
		DATE:	8th June 2020
		DRG BY:	M. Gillespie





OUTLINE SPECIFICATION

- EXTERNAL WALLS:** 100x50 RHS FRAME (REFER TO STRUCTURAL ENG. DETAILS) WITH 50x50 TREATED BATTEN RECEIVING SHIPLAP CLADDING IN SCANDINAVIAN PINE.
- 100mm FRAMING RIGID FOILED BACK INSULATION BETWEEN FRAMES WITH 100mm EXTERNAL EPS EXTERNAL INSULATION
- 50x25 BATTEN TO FORM SERVICE VOID
- INTERIOR WALLS:** 50x50 RHS FRAME (REFER TO STRUCTURAL ENG. DETAILS)
- 50x25 BATTEN TO FORM SERVICE VOID EACH SIDE.
- SURFACE LINING IN 12.5mm TIMBER BOARDING / PLASTER BOARD
- FLOORS:** 50x50 RHS FRAME (REFER TO STRUCTURAL ENG. DETAILS)
- 50mm RIGID FOILED BACKED INSULATION BETWEEN FRAMES WITH 100mm INSULATION FIXED UNDER/OVER.
- 18mm FLOORING GRADE OSB BOARD SUBSTRATE WITH AIR TIGHT MEMBRANE & CLIENTS FINISH FLOATING FLOOR OVER
- ROOF:** KINGSPAN KS500/1000 ZIP IP OR SIMILAR Standing Seam Roof Panel, core depth 5.75"
- WINDOWS:** uPVC WINDOWS WITH FIRE ESCAPE/RESCUE SUITABLE OPENING IN ALL HABITABLE ROOMS. U- Value 1.4 or BETTER
- INTERNAL DOORS:** MOLDED, PANELED DOORS. WHEEL CHAIR ACCESSABLE



NOTES.

- DRAWING TO BE READ IN CONJUNCTION WITH ALL RELEVANT DESIGNERS/MANUFACTURERS AND ENGINEERS DRAWINGS AND SPECIFICATIONS.
- IT IS THE CONTRACTORS RESPONSIBILITY TO VERIFY OR DETERMINE ALL DIMENSIONS AND LEVELS REQUIRED PRIOR TO COMMENCEMENT OF CONSTRUCTION OR PRODUCTION OF FABRICATION DRAWINGS
- REFER TO STRUCTURAL DRAWINGS & SPECIFICATION FOR STEEL DETAILS
- FOR INSULATION DETAILS REFER TO R-Value / U-Value Calculations
- DO NOT SCALE FROM THIS DRAWINGS. USE FIGURED DIMENSIONS ONLY.
- ANY CONFLICTS REQUIREMENTS WITH SITE, PLANNING CONDITIONS/REGULATIONS ETC. TO BE REPORTED TO THIS OFFICE IMMEDIATELY
- DRAINAGE PLANS - SITE SPECIFIC.
- ELECTRIC & SERVICE LAYOUT TO AGREED WITH CLIENT AND SUBJECT TO LOCAL REQUIREMENTS

CLIENT: Dormer	DRG TITLE: FLOOR PLANS
DRG No: SK(02)02	SCALE: 1:100
DATE: 6th July 2020	DRG BY: M. Gillespie



4 Bed option 2